

# Component Information Portal (CIP)

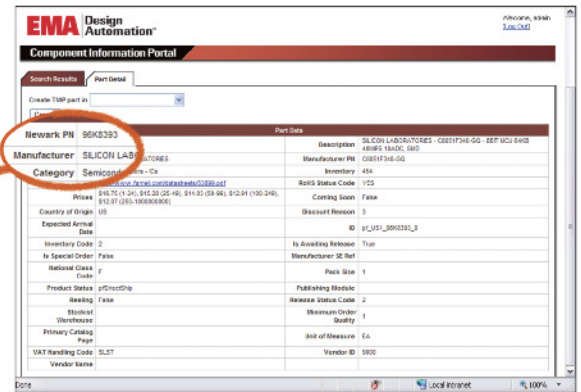
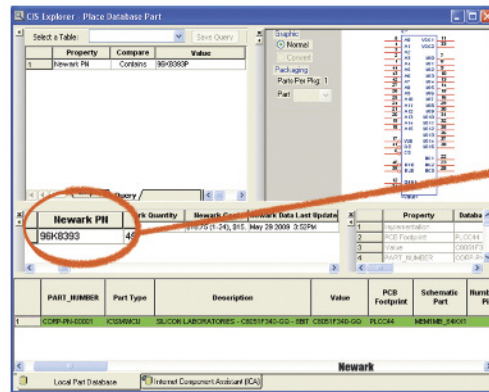
## Design with confidence in your part selection

# Reliable

### Benefits of CIP

- No need to manually collect part data. Part number, description, parametric information and RoHS compliance are all displayed and downloaded into the CIS database
- CIP includes an 'off-the-shelf' CIS parts database with a pre-defined set of fields
- Engineers can search and select distributor parametric data, like quantity available, within OrCAD Capture CIS
- CIP is equipped with a CIS database which includes a foundation library of 1,500 components, complete with symbols and footprints
- Purchasing, librarians and other non-EE individuals can search and select the distributor part data with CIP
- Advanced export feature allows users to update an external list of parts with the information from the CIS database
- CIP includes a temporary part request process and the ability to map distributor content to existing symbols and footprints in your CIS database

The EMA Component Information Portal™ (CIP) offers Cadence® OrCAD® Capture CIS users a comprehensive 'off-the-shelf' CIS management environment that includes a component library and lets them add, edit and modify parts with ease. CIP provides users with an interface that allows distributor part data to be downloaded directly into their CIS database.



*If an engineer is unable to locate a part in their local CIS database, they pull up CIP and connect live to the distributor website and search the online parts database for the desired part*

### New Part Request Process

An OrCAD Capture CIS user has the option to create temporary parts which can be used as a place holder within their design. Often times the temporary part has to go through an extensive internal review process by purchasing, manufacturing, and documentation groups before it can be approved for use. Every new part introduced requires significant administrative overhead to verify and add to the system. The Component Information Portal reduces this administrative overhead because the new parts added will be complete, purchasable, and RoHS compliant.

### Streamline the Part Selection Process

For any electronic component database to be effective, it needs a lot of parametric content. Populating hundreds of fields of parametric information for electronic components using a manual process is expensive, tedious, and error prone. CIP provides users with a fixed starter database, containing 1,500 parts with symbols and footprints, as a foundation for the successful implementation of CIS. Part data is copied directly into the database with the push of a button.

# Component Information Portal (CIP)–Enterprise

An enterprise solution for capturing schematic content

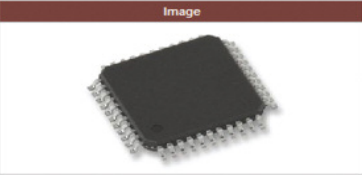
## Benefits of CIP Enterprise

- CIP Enterprise includes a database with device specific forms and multiple manufacturer support. The database is supported in Microsoft® SQL Server®
- Adds 10 more data fields to the pre-defined schema for additional data capture
- Foundation library of 5,000 components with symbols and footprints
- Integrated PCB Matrix LP Viewer for viewing EMA supplied footprints
- Supports up to 10 named users
- Administer database privileges based on administrative responsibilities
- Schedule automatic e-mail notifications for any new temporary or changed parts within the CIS database
- Associate multiple manufacturers to a single part by leveraging the relational database capability available in the Cadence® OrCAD® Capture CIS
- Capture and update part cost and quantity on hand information at any given time

CIP Enterprise features a foundation library that contains over 5,000 components with symbols and footprints.

Part Data	
Newark PII	96K8393
Manufacturer	SILICON LABORATORIES
Category	Semiconductors - ICs
Datasheet	<a href="http://www.farnell.com/datasheets/53899.pdf">http://www.farnell.com/datasheets/53899.pdf</a>
Prices	\$16.75 (1-24), \$15.28 (25-49), \$14.03 (50-99), \$12.91 (100-249), \$12.07 (250-1000000000)
Country of Origin	US
Expected Arrival Date	
Inventory Code	2
Is Special Order	False
National Class Code	F
Product Status	pDirectShip
Reeling	False
Stockist Warehouse	
Primary Catalog Page	
VAT Handling Code	SLST
Vendor Name	
Description	SILICON LABORATORIES - C8051F340-GQ - 8BIT MCU 64KB 48MPS 10ADC, SMD
Manufacturer PN	C8051F340-GQ
Inventory	454
RoHS Status Code	YES
Coming Soon	False
Discount Reason	3
ID	pf_US1_96K8393_0
Is Awaiting Release	True
Manufacturer SE Ref	
Pack Size	1
Publishing Module	
Release Status Code	2
Minimum Order Quantity	1
Unit of Measure	EA
Vendor ID	9000

Attributes	
Series	C8051 F
Memory Size, Flash	64 KB
Memory Size, RAM	4352 Byte
I/O lines, No. of	40
ADC Inputs, No. of	17
Timers, No. of	4
Frequency, Clock	48 MHz
Interface Type	I2 C, SPI, UART, USB



## Products designed to suit customer needs

The EMA Component Information Portal is available in two versions: CIP and CIP Enterprise. The standard version of CIP is delivered to customers as a single user license. It comes with a simplified Microsoft Access database formatted with generic fields to store all component data. CIP Enterprise supports multiple users with different access rights, allowing organizations to implement a part approval process and adding a level of protection to help maintain the integrity of the corporate CIS database. The CIP Enterprise version is enhanced with a Microsoft SQL Server database that allows engineering teams to store component information in a multi-table structure specific to device type.

## Cadence OrCAD Capture CIS with part distributor integration

Cadence OrCAD Capture CIS integration with part distributors provides a wealth of content at the engineer's fingertips. From device parameters to RoHS compliance status, the distributor integration provides access to part information for millions of orderable parts from hundreds of manufacturers. CIP presents part costs to engineers. For companies that have internal costing, the supplied information can still be used by engineers as a point of reference. The engineering reports from OrCAD Capture CIS can be configured to include cost data from distributors. This will enable engineers to perform cost rollups, especially for prototyping purposes.

# Component Information Portal (CIP)–Distributor Integration

An enterprise solution for capturing schematic content

## Available online part distributors



EMA continues to collaborate with leading electronics component distributors to deliver high value business solutions to our customers.

An industry leader among electronic component distributors offering one of the most complete part databases, Digi-Key® has over 1,000,000 components from more than 380 manufacturers. Digi-Key is commonly used by engineers as a starting point for part selection and prototyping because of their ability to deliver parts within 24 hours.



The Newark® online part database offers one of the industry's broadest selection of components, test equipment and RoHS compliant solutions, providing engineers' access to over 4 million orderable parts from more than 440 manufacturers. Newark stocks everything from the latest design-in technologies to popular replacement parts, and continually expands its suppliers portfolio to offer a one-stop shopping experience. Product information including real-time availability, contract pricing, datasheets, substitutes and accessories, are all available through their online part database.



The Farnell® online part database supports millions of engineers and purchasing professionals throughout Europe and Asia. It supplies a comprehensive range of electronics, electrical components and electrical parts, offering engineers the very latest technologies. Farnell continually expands their online part database adding 700 new products weekly, providing engineers with access to over 480,000 in stock products from over 3,500 manufacturers. With flexible ordering and fast same day dispatch, plus a comprehensive range of value-added support services, Farnell is one of the easiest, and most approachable part distributors to work with.

©2009 EMA Design Automation, Inc. All rights reserved in the U.S. and other countries. Cadence and OrCAD, are registered trademarks of Cadence Design Systems, Inc. Digi-Key is a registered trademark of Digi-Key Corporation. Newark and Farnell are registered trademarks of Premier Farnell PLC. All other marks are the property of their respective owners.

**cādence**<sup>™</sup>  
CHANNEL PARTNER

**EMA** | Design Automation<sup>™</sup>  
ema-eda.com