

Component Information Portal (CIP)

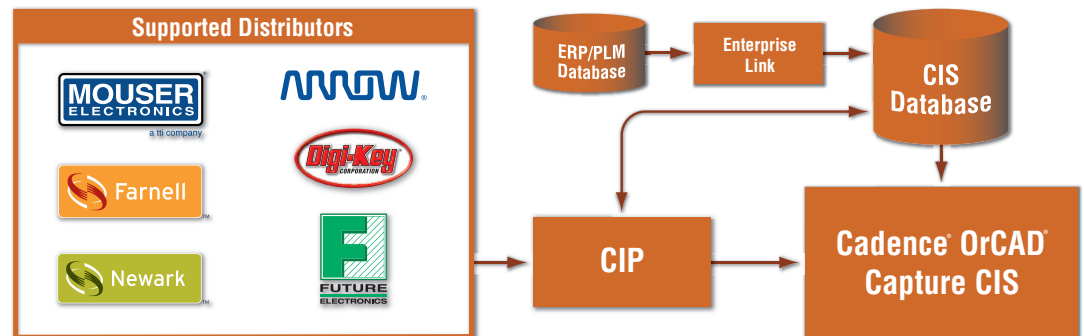
Design with confidence in your part selection

Reliable

Benefits of CIP

- Instant access to component parametric data for millions of parts from thousands of suppliers directly within OrCAD Capture CIS
- Automatic and error free download of part parametric data such as: Part Number, Value, Price, Qty on hand, RoHS status and more
- Get started quickly with an 'off-the-shelf' database including pre-defined schema and 5,000 part starter library
- Supports temporary part creation allowing the design to keep moving forward while a new part is being approved and introduced
- Purchasing, librarians and other non-EE individuals can use CIPs familiar web interface to search and select the distributor part data using one common tool for component research
- Make sure your component data is always current with automated distributor data synchronization capabilities
- Automated e-mail notifications keep all stakeholders informed of important changes
- Avoid single source part issues with multi-distributor support using Cadence OrCAD Capture CIS relational database

The EMA Component Information Portal™ (CIP) offers Cadence® OrCAD® Capture CIS users a comprehensive 'off-the-shelf' component data management environment. CIP removes the barriers to implementing an effective component management process, allowing design teams to quickly and cost effectively realize the full benefits of a shared component database.



If an engineer is unable to locate a part in their local CIS database, they pull up CIP and connect live to the distributor website and search the online parts database for the desired part

Streamline the Part Selection Process

For any electronic component database to be effective, it needs a lot of parametric content. Populating hundreds of fields of parametric information for electronic components using a manual process is expensive, tedious, and error prone. CIP provides users with a fixed starter database, containing 5000 parts complete with symbols and footprints, as a foundation for the successful implementation of CIS. Part data is copied directly into the database with the push of a button.

Cadence OrCAD Capture CIS with part distributor integration

Cadence OrCAD Capture CIS integration with part distributors provides a wealth of content at the engineer's fingertips. From device parameters to RoHS compliance status, the distributor integration provides access to part information for millions of orderable parts from thousands of manufacturers. CIP presents part costs to engineers. For companies that have internal costing, the supplied information can still be used by engineers as a point of reference. The engineering reports from OrCAD Capture CIS can be configured to include cost data from distributors. This will enable engineers to perform cost rollups, especially for prototyping purposes.

cādence®

EMA | Design Automation™
Cadence Channel Partner

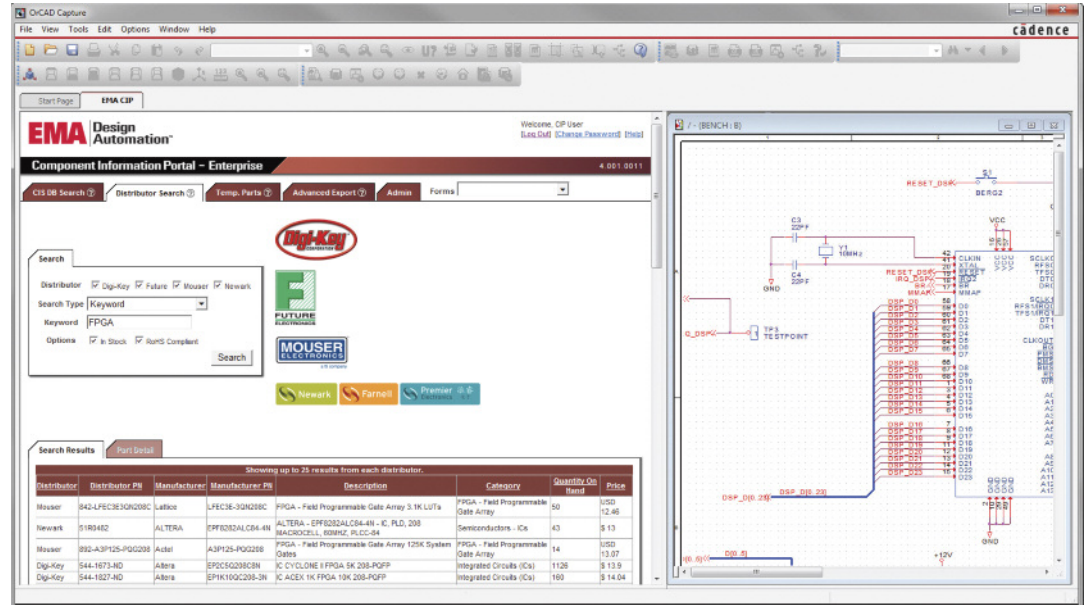
Component Information Portal (CIP)

An enterprise solution for capturing schematic content

Supported distributors:



CIP features a foundation library that contains over 5,000 components with symbols and footprints.



Access CIP directly within the OrCAD Capture CIS environment enabling live component searches from your favorite distributors without ever having to leave OrCAD

For More Information

For more information about CIP, please visit www.ema-eda.com/CIP

For sales and pricing information contact EMA Design Automation, a Cadence Channel Partner.

EMA Design Automation, Inc.
225 Tech Park Drive
Rochester, New York 14623

Phone: 585.334.6001
Toll Free: 877.362.3321
Fax: 585.334.6693
eMail: info@ema-eda.com
Web: www.ema-eda.com

New Part Introduction

An OrCAD Capture CIS user has the option to create temporary parts which can be used as a place holder within their design. Often times the temporary part has to go through an extensive internal review process by purchasing, manufacturing, and documentation groups before it can be approved for use. Every new part introduced requires significant administrative overhead to verify and add to the system. The Component Information Portal reduces this administrative overhead because the new parts added will be complete, purchasable, and RoHS compliant.

Manage User Roles

CIP supports user privileges and roles to define access rights to your component data. This ensures data integrity and gives users access to only the information they need. E-mail notifications can be enabled to inform stakeholders of changes to the component database as they happen keeping everyone in sync.

System Requirements

CIP Web Server System Requirements

- Compatible Microsoft Operating Systems
 - Windows: 7, Vista, XP (SP2 or greater)
 - Windows Server: 2008 R2, 2008, 2003

Other Required Microsoft Components

- .NET Framework 2.0
- ASP.NET AJAX 1.0
- Web Services Enhancements (WSE) 3.0 for Microsoft .NET

Hardware

- Minimum 500 MHz Processor (Ideally 1GHz+)
- Minimum 512 MB Drive Space (Ideally 1 GB+)

CIP Database Server System Requirements

- SQL Server W/Database Tools (Management Studio)
 - Microsoft SQL Server 2005 or later

Compatible Microsoft Operating Systems

- Windows: 7, Vista, XP (SP2 or greater)
- Windows Server: 2008 R2, 2008, 2003

Hardware

- Minimum 500 MHz Processor
- Minimum 4 GB Drive Space

CIP Client

- Internet Browser
 - Microsoft Internet Explorer 7.0 or later

©2011 EMA Design Automation, Inc. All rights reserved in the U.S. and other countries. Cadence and OrCAD are registered trademarks of Cadence Design Systems, Inc. Digi-Key is a registered trademark of Digi-Key Corporation. Newark and Farnell are registered trademarks of Premier Farnell PLC. Mouser and Mouser Electronics are registered trademarks of Mouser Electronics, Inc. Future Electronics and the Future Electronics logo are registered trademarks of Future Electronics. All other marks are the property of their respective owners.